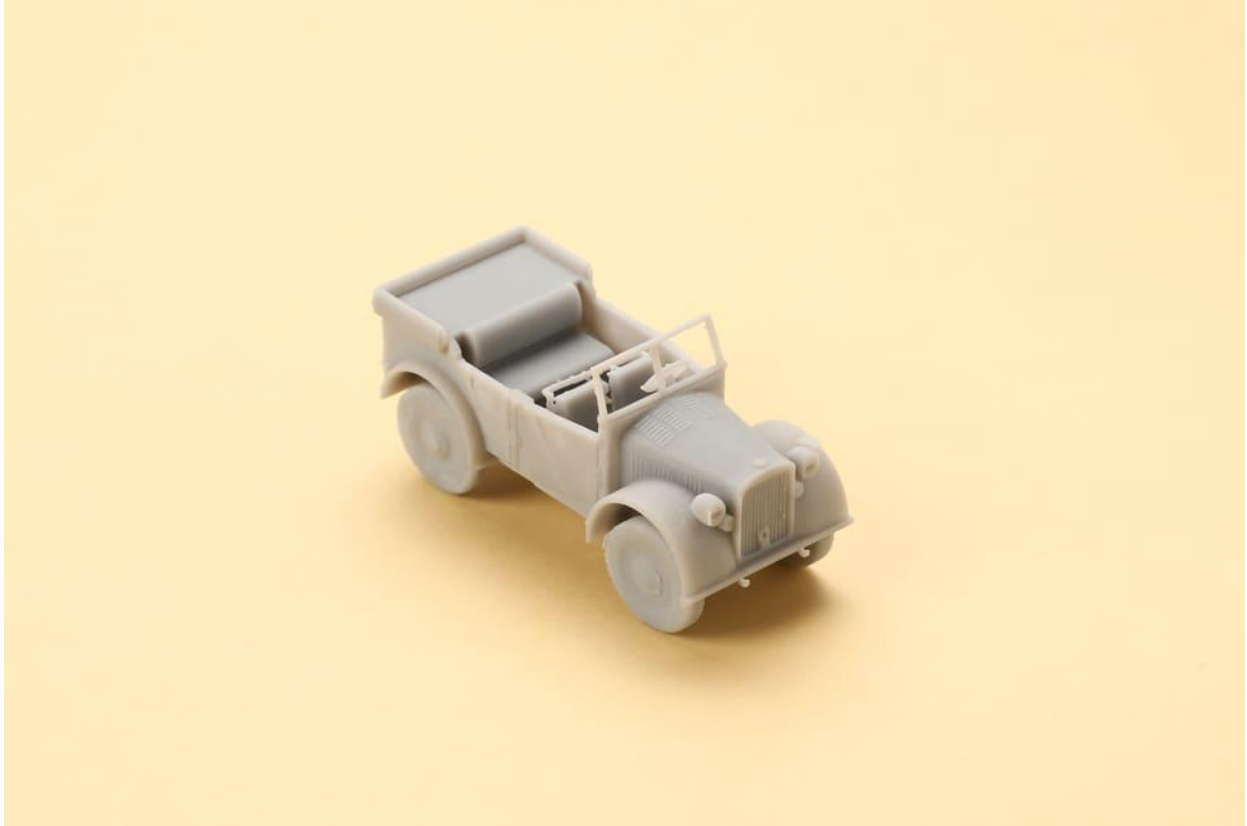


## High-Detail Resin Gray Datasheet



### Overview

Designed for high-precision manufacturing, High-Detail Resin Gray is a perfect material for miniatures, sculptures, etc. With SLA 3D printing, it produces parts with an extremely smooth surface and impressive precision.

**As-printed Part's Tolerance:  $\pm 200\mu\text{m}$  or 0.2%**

**Maximum Printing Size: 600\*600\*400mm**

## Properties

Thermal Properties	Metric	Method
Heat Deformation (0.46 MPa)	53°C	ASTM D648M
Mechanical Properties	Metric	Method
Tensile Strength	47.2MPa	ASTM D638M
Tensile Modulus	2587MPa	ASTM D638M
Elongation at Break	6.4%	ASTM D638M
Flexural Properties	Metric	Method
Flexural Modulus	2562MPa	ASTM D790M

## Pros

With exceptional detail fidelity, SLA printed high-detail resin gray delivers a sleek, smooth finish that's easy to paint or color. Its low water absorption also makes it an excellent choice for applications requiring water resistance.

## Cons

Thicker, solid prints may show a slight yellow tint during production. Over time, resin-based products exposed to direct sunlight can gradually yellow and lose their strength, becoming more brittle with prolonged UV exposure.

## Applications

Miniatures and Sculptures

Consumer Electronics

Home Supplies

Industrial Display Panels

Props

Experimental Instruments

Interior Decorations

Figurines

Game Consoles